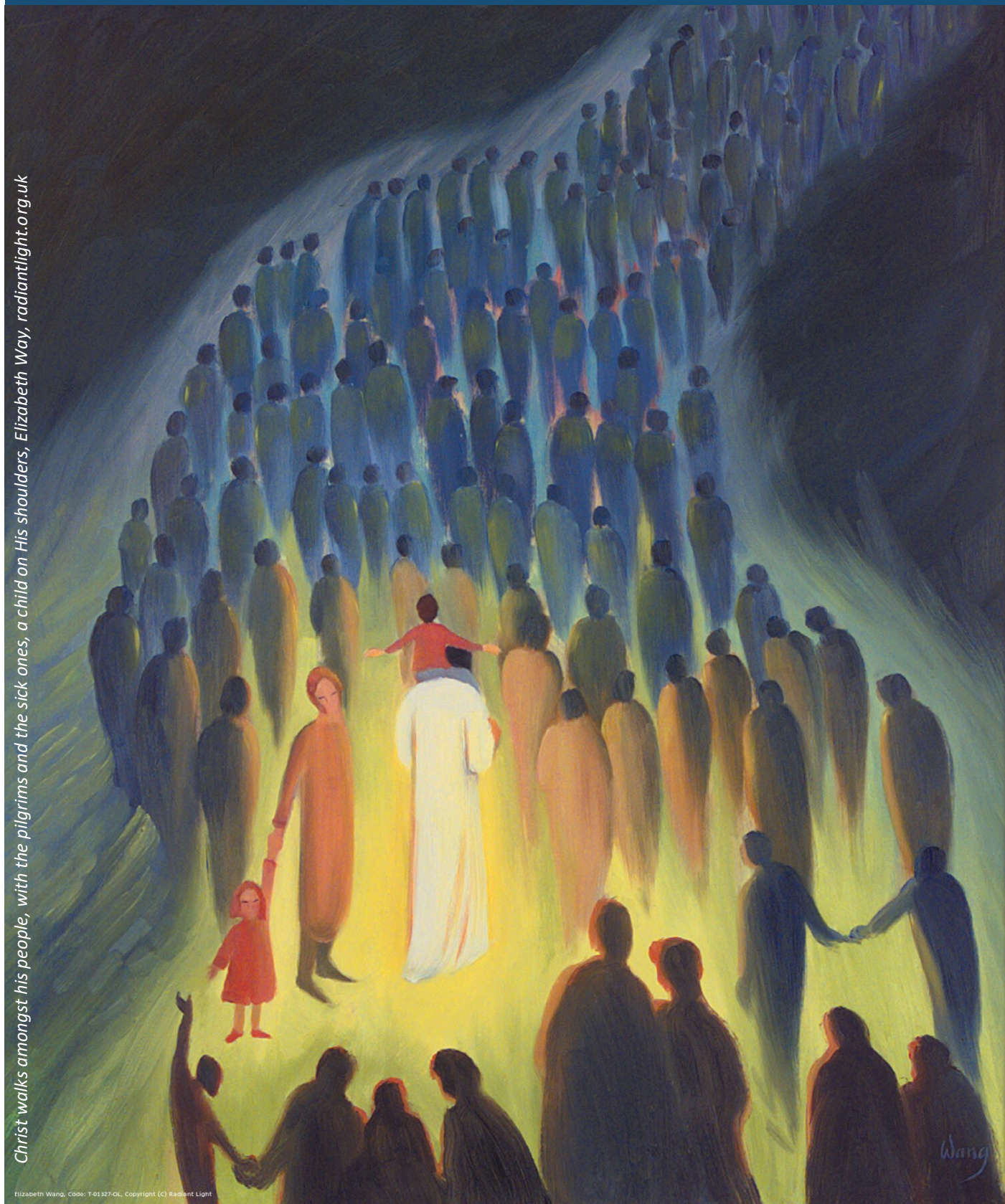


Parish Reality for Evangelisation – Discerning what is God’s will

Christ walks amongst his people, with the pilgrims and the sick ones, a child on His shoulders, Elizabeth Wang, radiantlight.org.uk



Elizabeth Wang, Code: T-01327-OL, Copyright (C) Radiant Light

Do not be conformed to this world, but be transformed by the renewal of your mind, that by testing you may discern what is the will of God, what is good and acceptable and perfect. Romans 12:2

**Some
Definite
Service**



Agency for Evangelisation
and Catechesis
ARCHDIOCESE of SOUTHWARK

Vision statement

We desire to be a parish in which everyone's personal relationship with Jesus Christ is established, confirmed, strengthened and renewed.

We desire to be a people who, choosing Christ anew daily, long to witness more to others while seeing those already in our parish and helping them grow close to Jesus.

We desire to be a parish in which every disciple is a personal witness to the Gospel.

Thinking of our Parish Reality enables us to begin to see both what and who we are missing. Given our reality, where do we want to expend our energy on evangelisation? What needs to be clarified, what can be a first step? Given our parish reality, what is most needed now for most parishioners already coming in order to become more missionary? In all this pondering we keep our eyes fixed on the Lord – expecting Him to speak and listening to each other where God is repeating the same things as we move forward.

We pray together with scripture:

- ◆ What struck you about this passage? Perhaps just one word.
- ◆ What did you notice that you hadn't before?
- ◆ How does the Lord want you to be transformed? How will you respond?

Take 5 minutes to reflect on this.

- ◆ What does the Lord want for this parish?
- ◆ What/who are we missing?
- ◆ Where do we want to expend our energy?
- ◆ What is the need?

Take 5 minutes to reflect on this.



Our Parish Reality for Evangelisation – getting to grips with the reality of where we are

Statistics:

- Mass Attendance data
- What does our RCIA programme look like?
- Demographic of congregation vs demographic of parish

Audit:

- Finances
- People
- Previously / well established patterns of working
- Spiritual and emotional position of Parish leaders and congregation in general
- Identifying particular needs in the Parish

Three key questions:

1. What are we doing well? What do we have that is strong?
2. What is the problem? Why is this a problem? Both stating that it is a problem and trying to work out the cause?
3. What would potential solutions look like? Practically, materially and spiritually.

